

Year 6

Home learning

Maths

Day 2. Add and subtract negative numbers



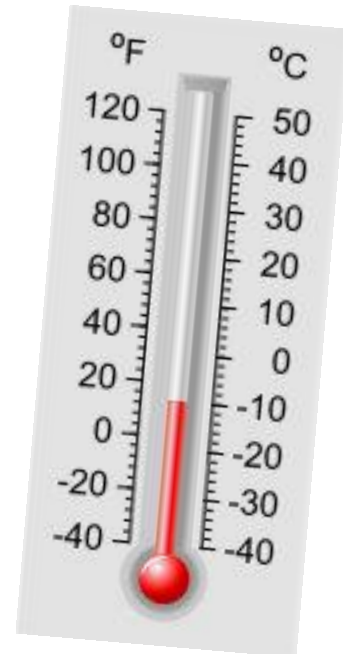
Is it possible to have less than nothing?



How do we represent nothing?

How do we represent less than nothing?

Starter: Where do you use negative numbers in everyday life?



What happens when we
add and *subtract* negative
numbers?

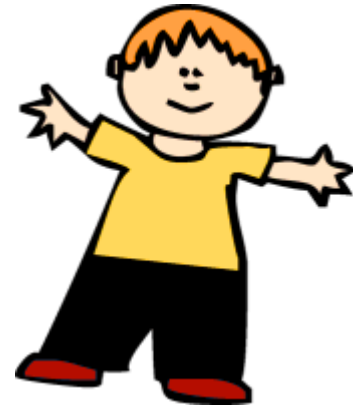
I would like to introduce
you to...

A S S



and

S I D





ASS **A**dd **S**ame **S**igns

$$8 \overset{+}{- -} 6 = 14$$

TIP: This is read as – eight minus, minus six

Look at the signs in the middle: if they are the same, then replace them with +



SID **S**ubtract **I**f **D**ifferent

$$8 \overset{-}{+} 6 = 2$$

TIP: This is read as - eight plus, minus six

Look at the signs in the middle: if they are different, then replace them with -

So, who do we need to help us work out these calculations?



or



A S S

S I D

$$16 - 4 =$$

$$47 + 4 =$$

$$4 + 4 =$$

$$122 - 4 =$$

So, who do we need to help us work out these calculations?



or



A S S

S I D

$$16 - 4 = 20$$

$$47 + 4 = 43$$

$$4 + 4 = 0$$

$$122 - 4 = 126$$

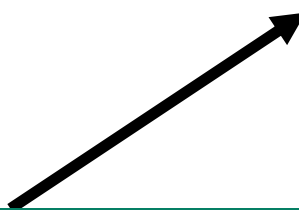
But what about this one?

Can you use all your knowledge of negative numbers so far to find the answer to these calculations?



$$-6 \quad \overset{-}{+} \quad -2 =$$

$$-6 \quad \overset{+}{-} \quad -8 =$$



Remember: This is your start number and the new sign in the middle is the direction

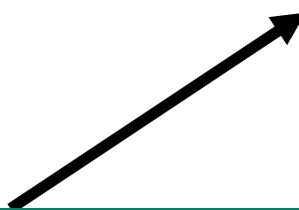
But what about this one?

Can you use all your knowledge of negative numbers so far to find the answer to these calculations?



$$-6 \overset{-}{+} -2 = -8$$

$$-6 \overset{+}{-} -8 = 2$$



Remember: This is your start number and the new sign in the middle is the direction

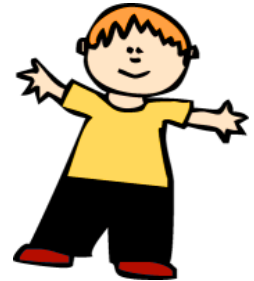
Try these...

$$10 + + 3 =$$

$$15 + - 4 =$$

$$6 - + 7 =$$

$$11 - - 2 =$$



Do **NOT** use when the signs are separate:

$$+5 - 7 = -2$$

$$- 4 + 5 = 1$$

$$- 3 - 4 = -7$$

Answers

$$10 + + 3 = 10 + 3 = 13$$

$$15 + - 4 = 15 - 4 = 11$$

$$6 - + 7 = 6 - 7 = -1$$

$$11 - - 2 = 11 + 2 = 13$$



Do **NOT** use when the signs are separate:

$$+5 - 7 = -2$$

$$- 4 + 5 = 1$$

$$- 3 - 4 = -7$$